

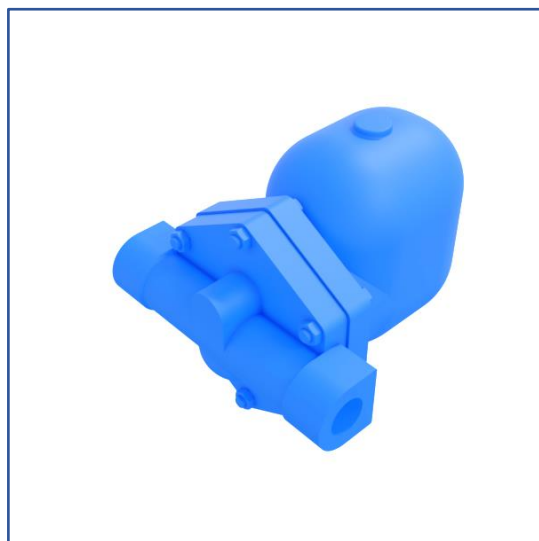
Eurotrap steam trap type BF6 – BF8

Float steam trap for horizontal or vertical installation

The Eurotrap steam trap type BF6/8 is a float steam trap made of ductile iron, carbon steel or stainless steel. The float mechanism of this steam trap controls the discharge of condensate and the thermal vent controls the discharge of cold air at start-up. The valve and seat are located below the condensate level, so when closed this metallic seal does not allow steam to pass through. Various float mechanisms are available to allow the valve to open at all pressure differences and to discharge large amounts of condensate at a small pressure difference. Applications of the Eurotrap float steam trap type BF6/8 are discharging of heat exchangers. Working pressure 0 – 32 bar.



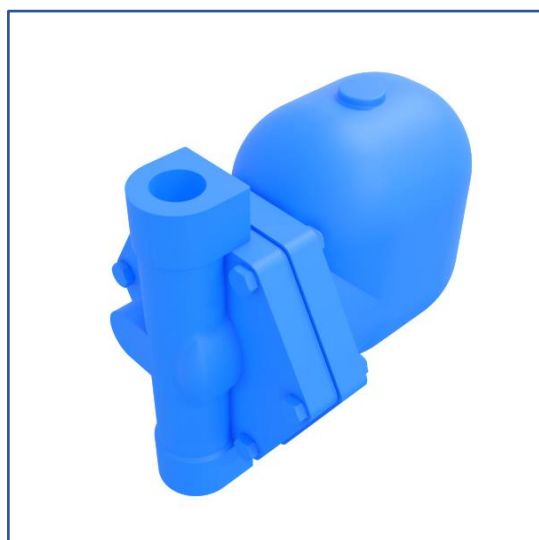
BF6/8-F flanged, horizontal



BF6/8 thread, horizontal



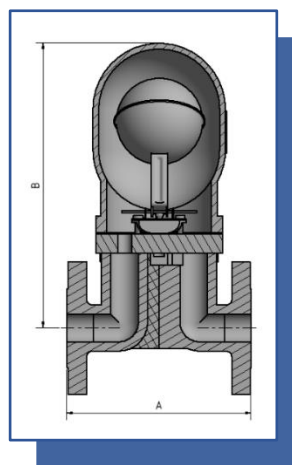
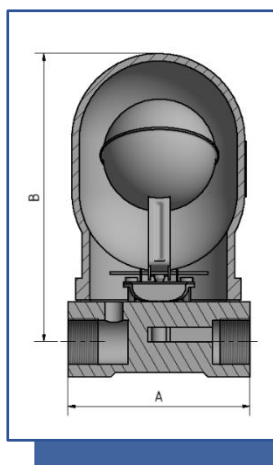
BF6/8-F flanged, vertical



BF6/8 thread vertical

Eurotrap steam trap type BF6 – BF8

Built-in sizes



Connection	BF6/8 DI/CS/CF	BF6/8-F DI/CS/CF
In-/outlet	thread 1 1/2"-2" BSP/NPT	Flanged DN40/50-PN16/PN40
A (mm)	280	230
B (mm)	290	400
Weight (kg)	24.5	30

Range	BF6/8 DI		BF6/8 CS		BF6/8 CF	
Pressure	PMO 21 bar	PMA 40 bar	PMO 32 bar	PMA 40 bar	PMO 32 bar	PMA 40 bar
Temperature	TMO 300°C	TMA 300°C	TMO 300°C	TMA 300°C	TMO 300°C	TMA 300°C
Pressure class	PN16		PN40		PN40	

Materials	BF6/8 DI	BF6/8 CS	BF6/8 CF
Body	EN-GJS-400-18	ASTM A216 WCB	ASTM A351 CF8
Internals	Various ss		
Gaskets	Laminated graphite with SS304 inserts		

